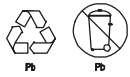




by Schneider Electric

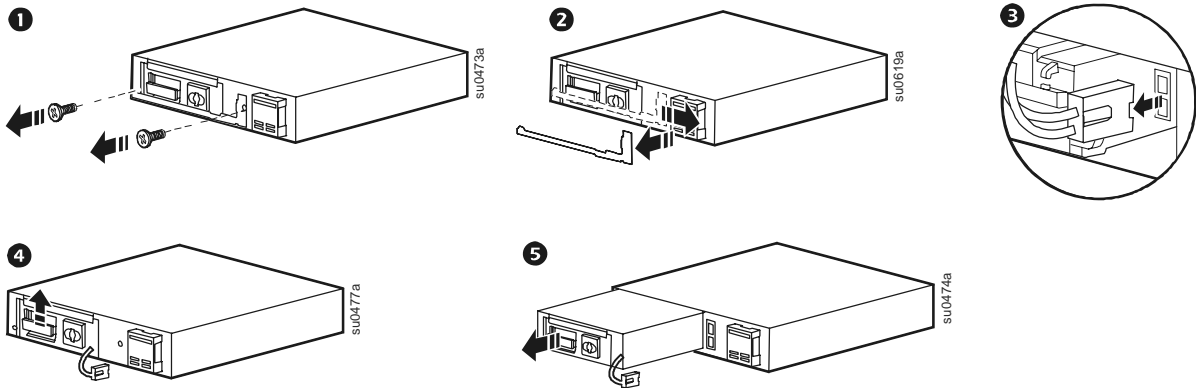
# Smart-UPS® X-Series 2000-3000 VA RBC 117 & 118

## UPS Replacement Battery—APCRBC117

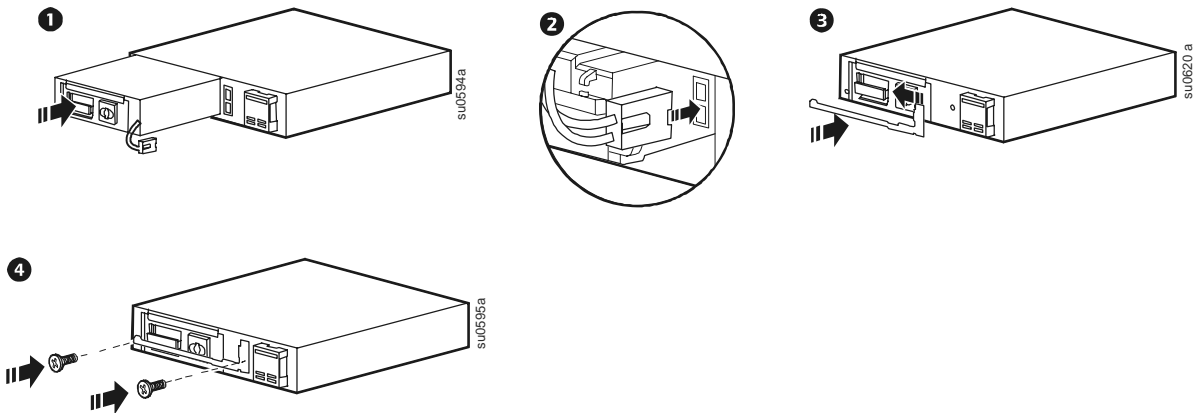


For information on recycling the used battery, see the Used Battery Information sheet included with the replacement battery.

### Remove the UPS Battery



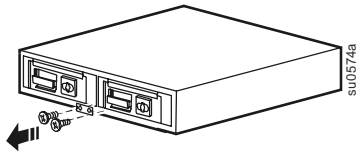
### Install the UPS Replacement Battery



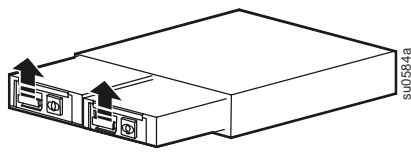
# XLBP Replacement Batteries—APCRBC118

## Remove the XLBP Batteries

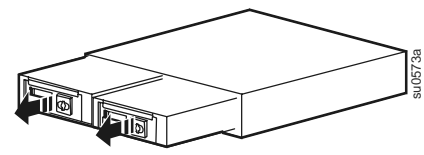
1



2

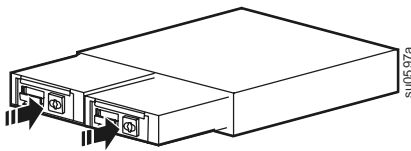


3

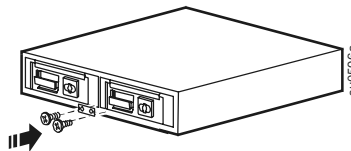


## Install the XLBP Replacement Batteries

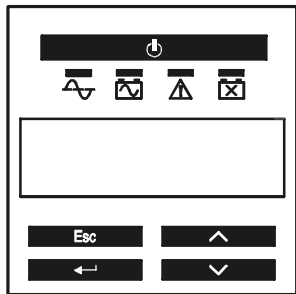
1



2



## Reset the Battery Install Date



Reset the Battery Install Date for the internal UPS battery.

If the Battery Install Date screen does not appear on the display interface within two minutes of installing the new battery, use the arrow keys to navigate to: **Main Menu > Configuration > Battery Install Date**.

On the Battery Install Date screen, use the arrow keys to select the month, date, and year. Press ENTER to make a selection and move to the next option.

When finished, press ENTER to save the date.

When the RBC is fully charged, perform a self-test and run time calibration test.